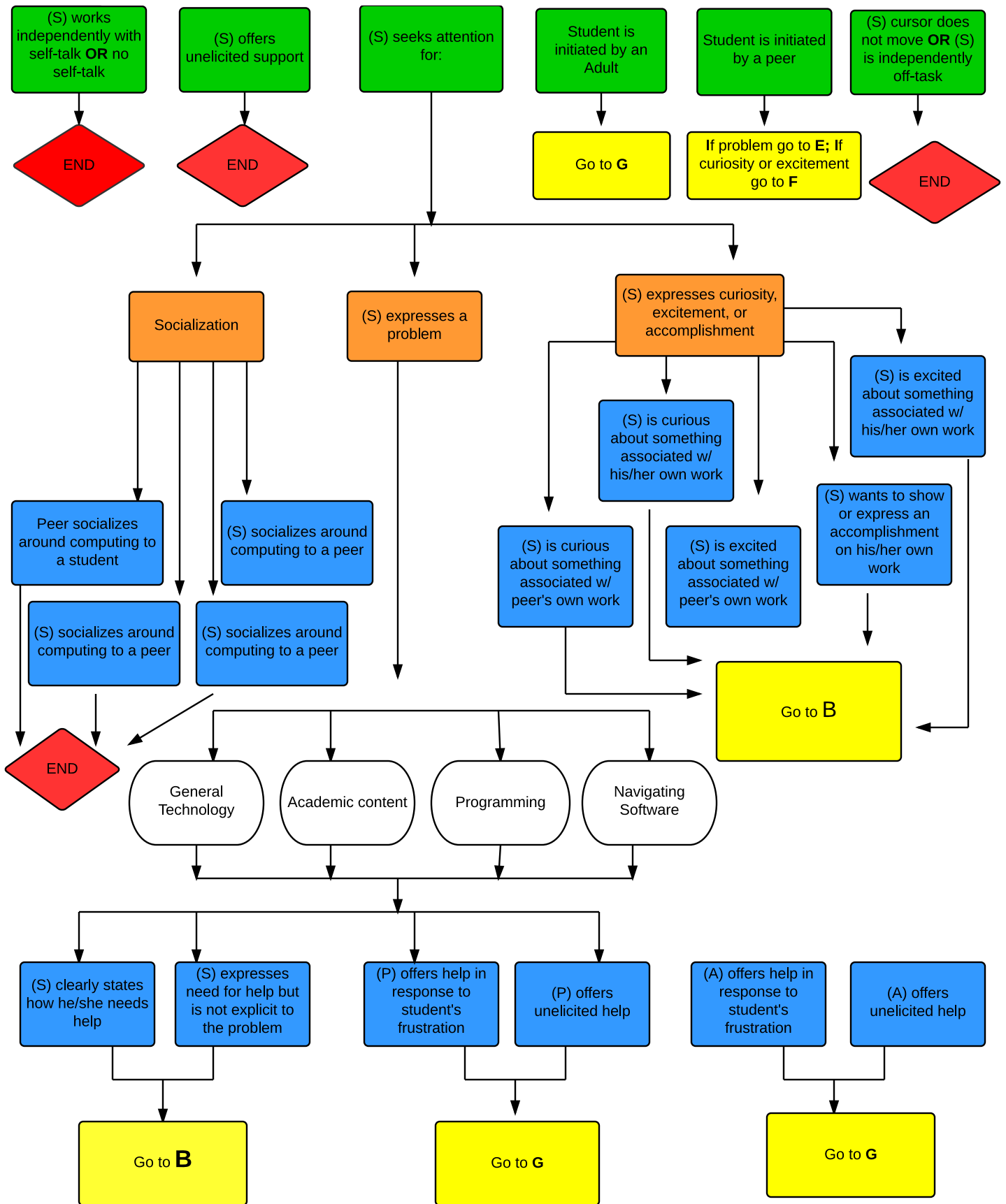
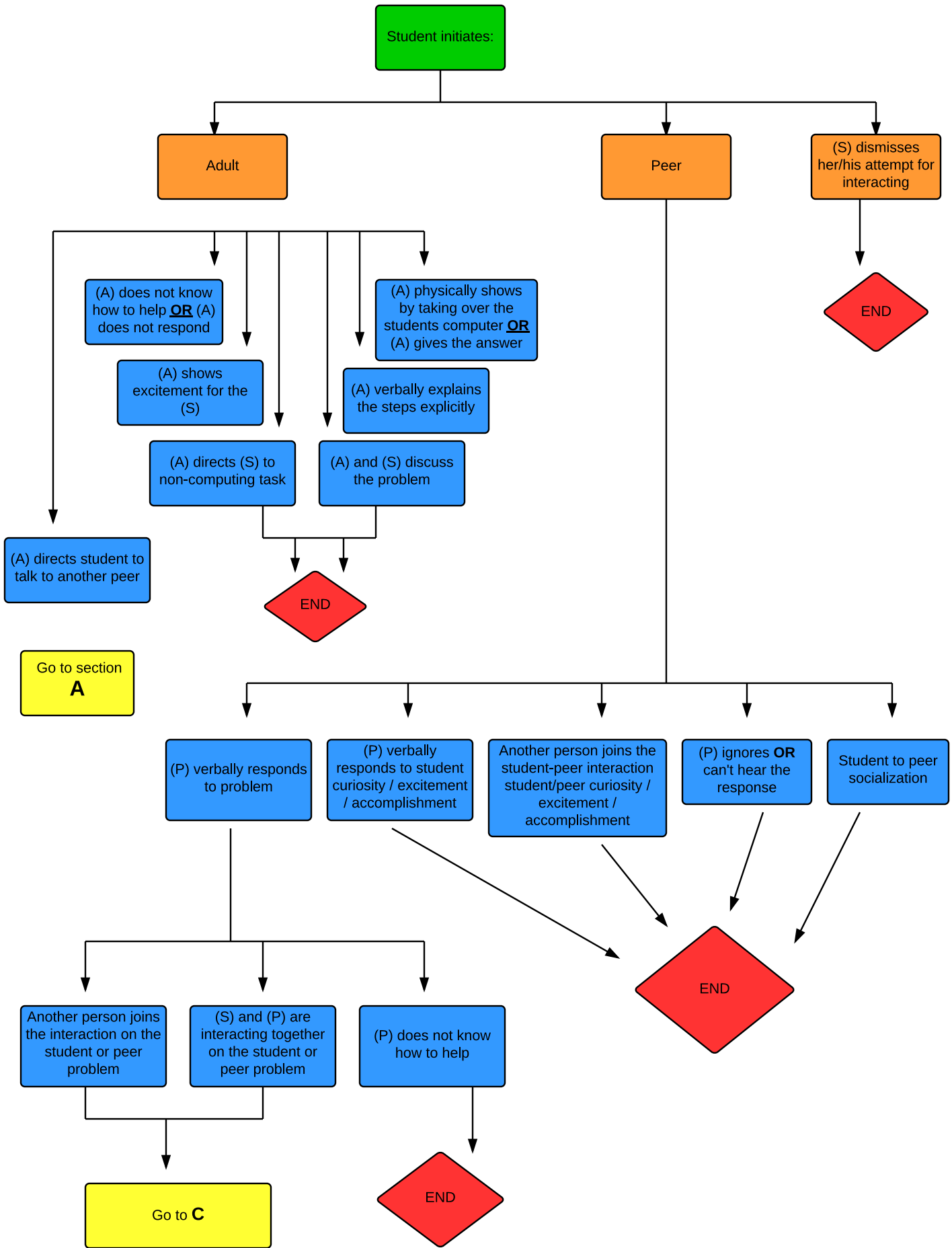
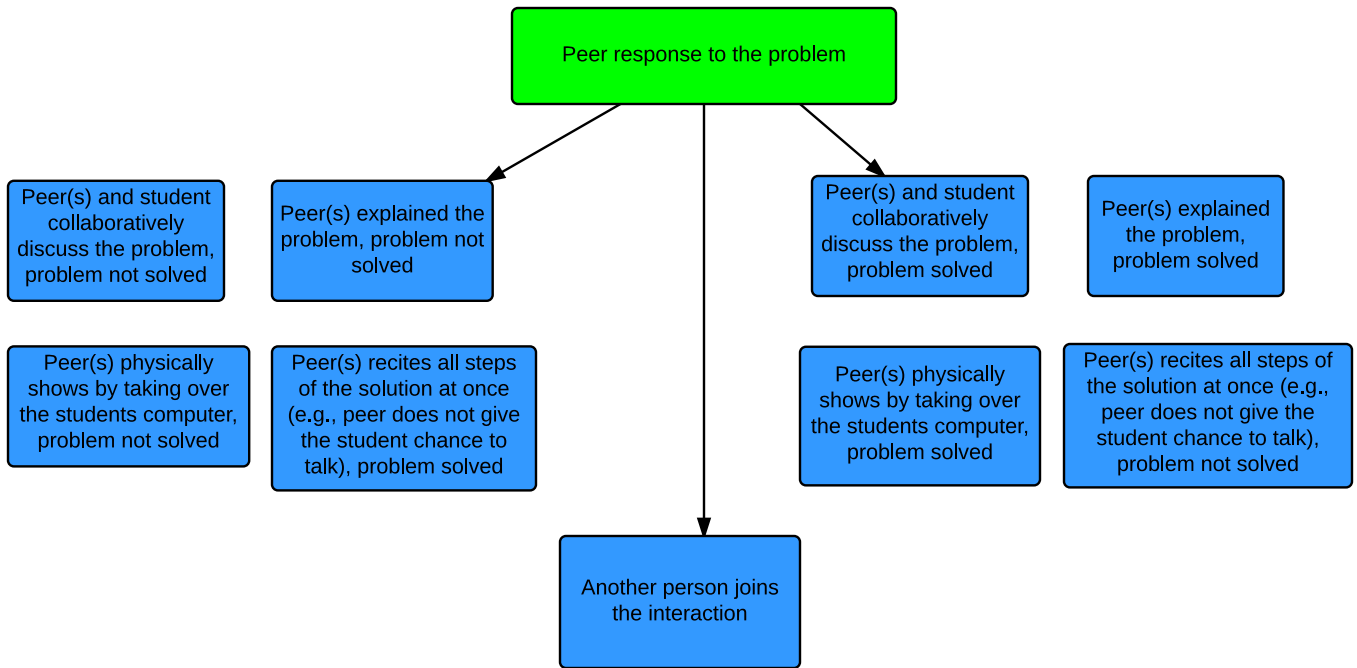


Israel, M., Wherfel, Q., & Shehab, S. (2015). Collaborative Computing Observation Instrument Flow Chart







Another person joins the interaction on the student or peer problem

(P) helps (S) with a problem



Problem Solved

Problem not solved

Student seeks additional support from same peer

(S) works independently for at least x amount of seconds/minutes or steps

Student becomes the peer and models peer support

Go to section **A**

END

END

Student works independently

Student seeks additional support with new peer

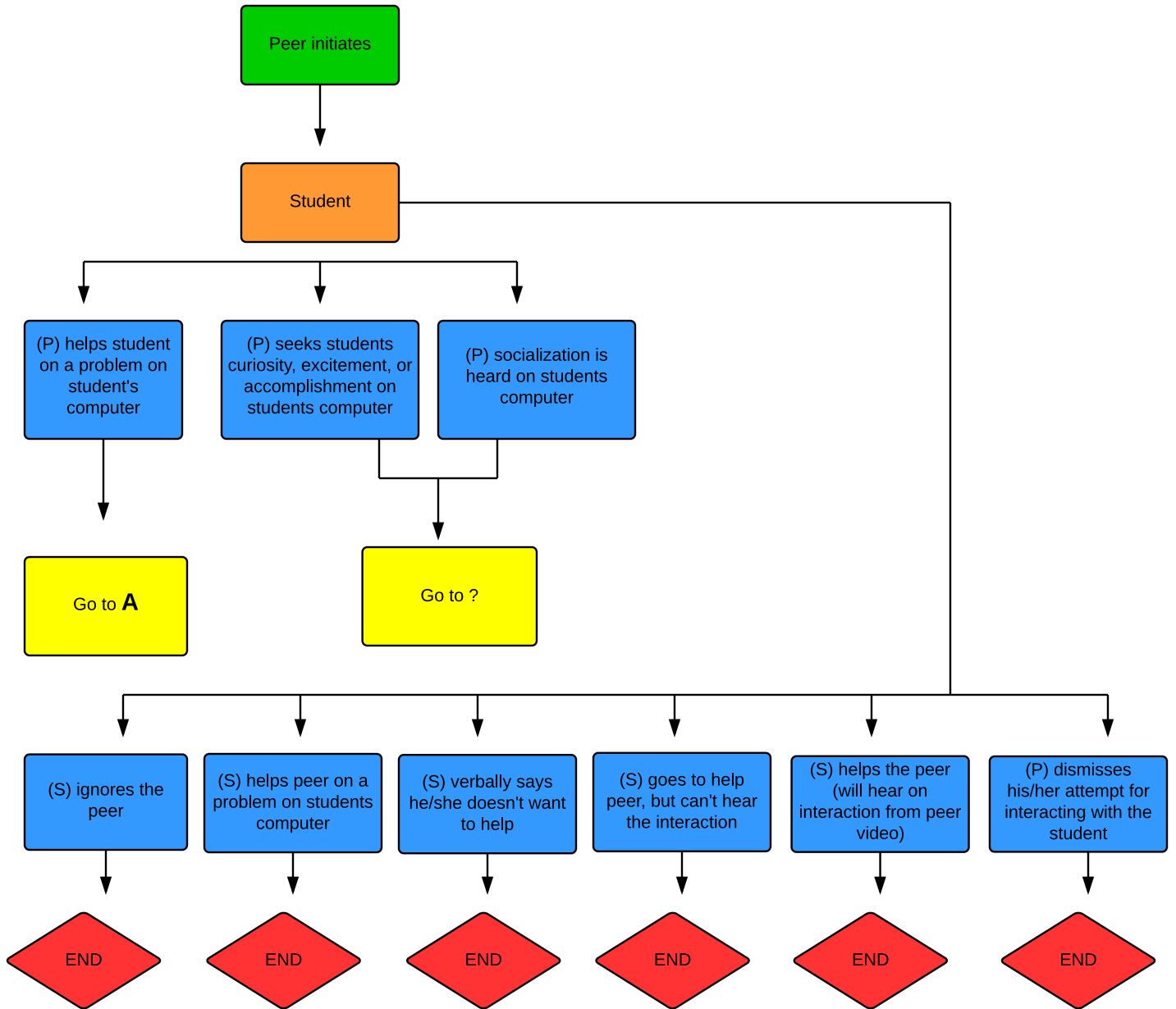
Student gives up **OR** leaves his/her station

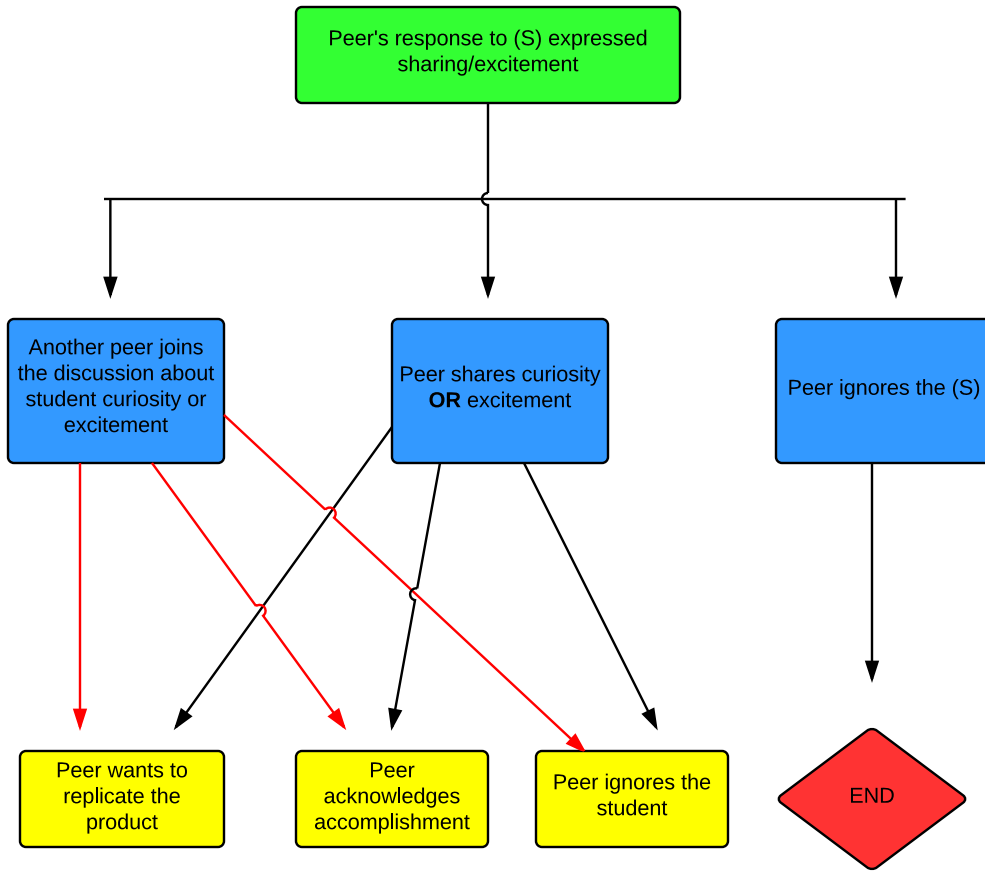
Student seeks additional support from an adult

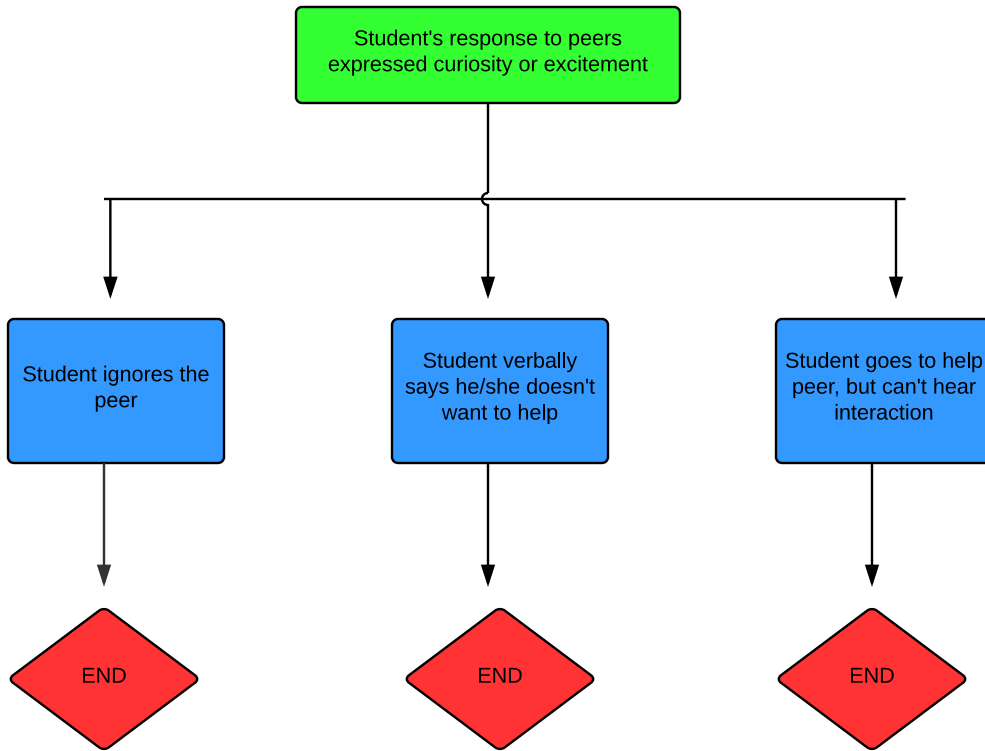
Student seeks additional support with same peer

Go to section **A**

END



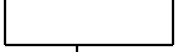
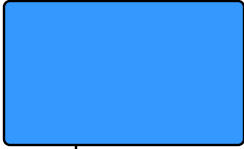
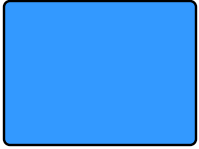




Adult initiates GO
TO #11



Student



Go to ?

Go to ?

Student response to peer problem:

Do not know how
to help

Elicit another
person

Physically show

Verbally explain

Collaboratively
solve